

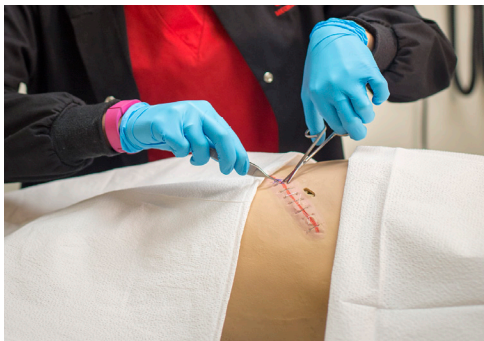
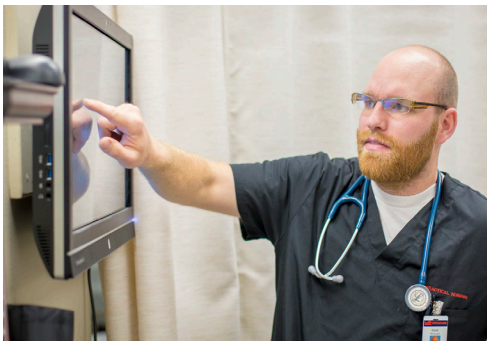
# Medical Assisting Practical Nursing

Transfer Your High School Courses to BTECH

High School-Talk To Your Counselor Today!

**BTECH**

High School Courses	BTECH Classes		Hours Earned	Hours Required
Medical Assisting				
HTHS 1110/1111 Integrated Anat & Phys (WSU)	MEDA1405	A&P for the Medical Professional	180	180
Psychology 1010 (USU)	MEDA2170	Psychology for Healthcare	60	60
HTHS 1101 Med Terms (WSU)	N/A	Pre-Admission: Medical Assisting	N/A	N/A
Practical Nursing				
HTHS 1110/1111 Integrated Anat & Phys (WSU)	N/A	Prereq Course: Human Anatomy	N/A	N/A
Nutrition 1020 (USU)	N/A	Prereq Course: Nutrition	N/A	N/A
Psychology 1010 (USU)	N/A	Prereq Course: Psychology	N/A	N/A
HTHS 1101 Med Terms (WSU)	N/A	Pre-Admission: Practical Nursing	N/A	N/A
For School Year 2021-2022				
**Must pass State Skills Test(s), earn a B or better grade, and attend BTECH within two years of graduation to transfer. Competency demonstration may be required.**				



To view our official publication, please visit: [www.btech.edu](http://www.btech.edu)